

MEDAC

Working Group 2 on pelagic fishes - ICCAT

17 October 2024
Split, Croatia



Leon Bouts
Head of Sector Planning & Assessment
Unit for Mediterranean, Black Sea,
Indian Ocean, and South Atlantic

IN THIS PRESENTATION



Eastern Atlantic and Mediterranean JDP



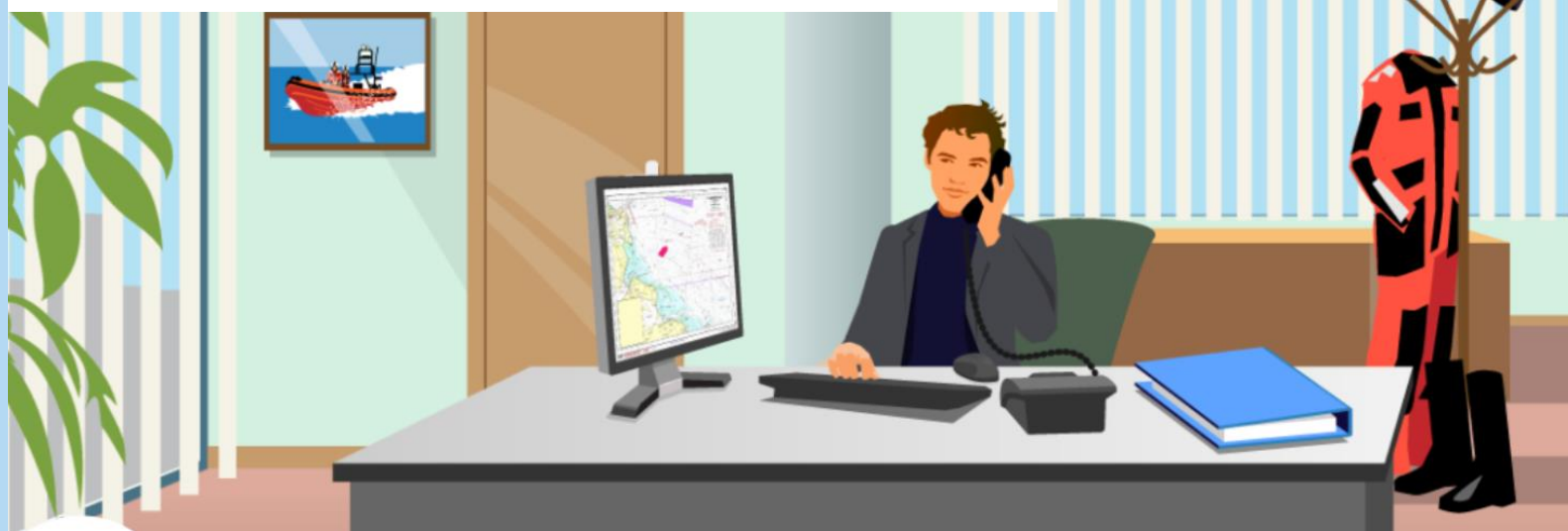
Preliminary results of the 2024 specific campaign for bluefin tuna of the Eastern Atlantic and Mediterranean JDP

EASTERN ATLANTIC AND MEDITERRANEAN JDP



Fisheries control basic principles (who does what?)

Role of Member States



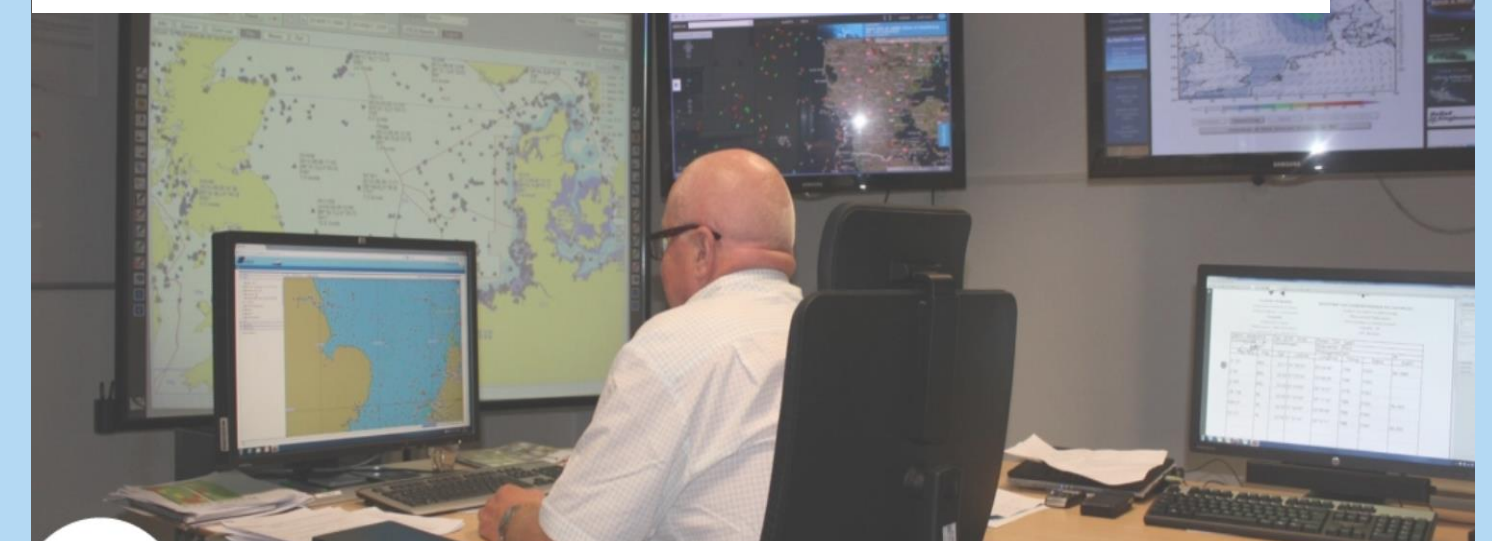
- Ensure control, inspection and enforcement of activities, including the establishment of sanctions
- Coordinate the collection, treatment and certification of information on fishing activities
- Reporting, cooperating with and ensuring the transmission of info to COM, EFCA, other MS and non-EU countries

- Proposals for legislation
- Has its own inspectors who can visit MS authorities to check implementation of EU rules

Role of European Commission



Role of EFCA



- Organizes operational coordination of fisheries control and inspection activities by the MS
- Assists MS to cooperate so as to comply with the rules of the CFP in order to ensure its application

EASTERN ATLANTIC AND MEDITERRANEAN JDP



***Commission Implementing Decision
2018/1986/EU of 13 December 2018
(last update 02.10.2023)***

Link: <https://eur-lex.europa.eu/legal-content/EN/TXT/PDF/?uri=CELEX:02018D1986-20231005&qid=1711022122495>

Control Regulation

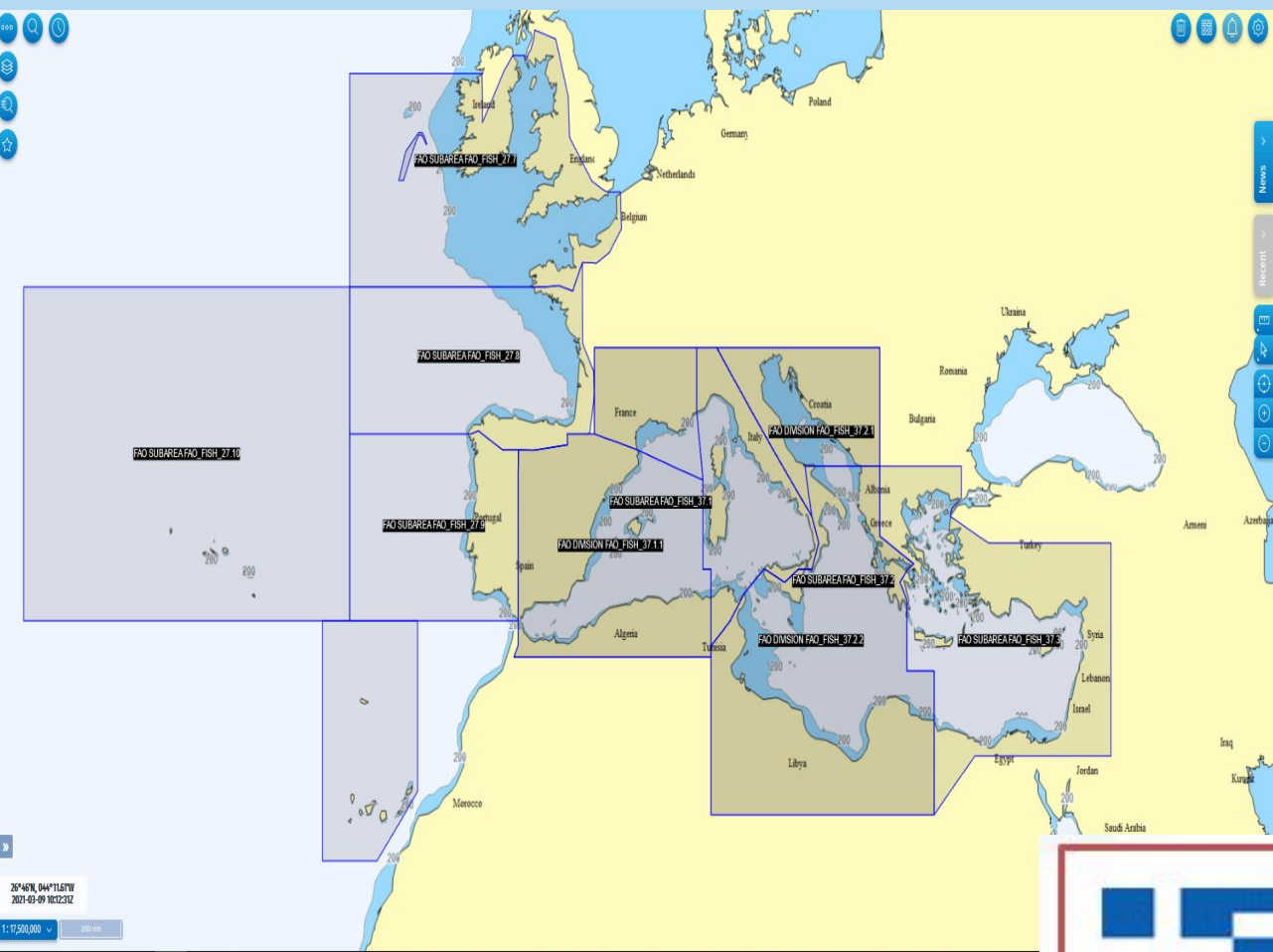
Specific Control and
Inspection Programme
(SCIP)

Joint Deployment Plan
(JDP)

EASTERN ATLANTIC AND MEDITERRANEAN JDP



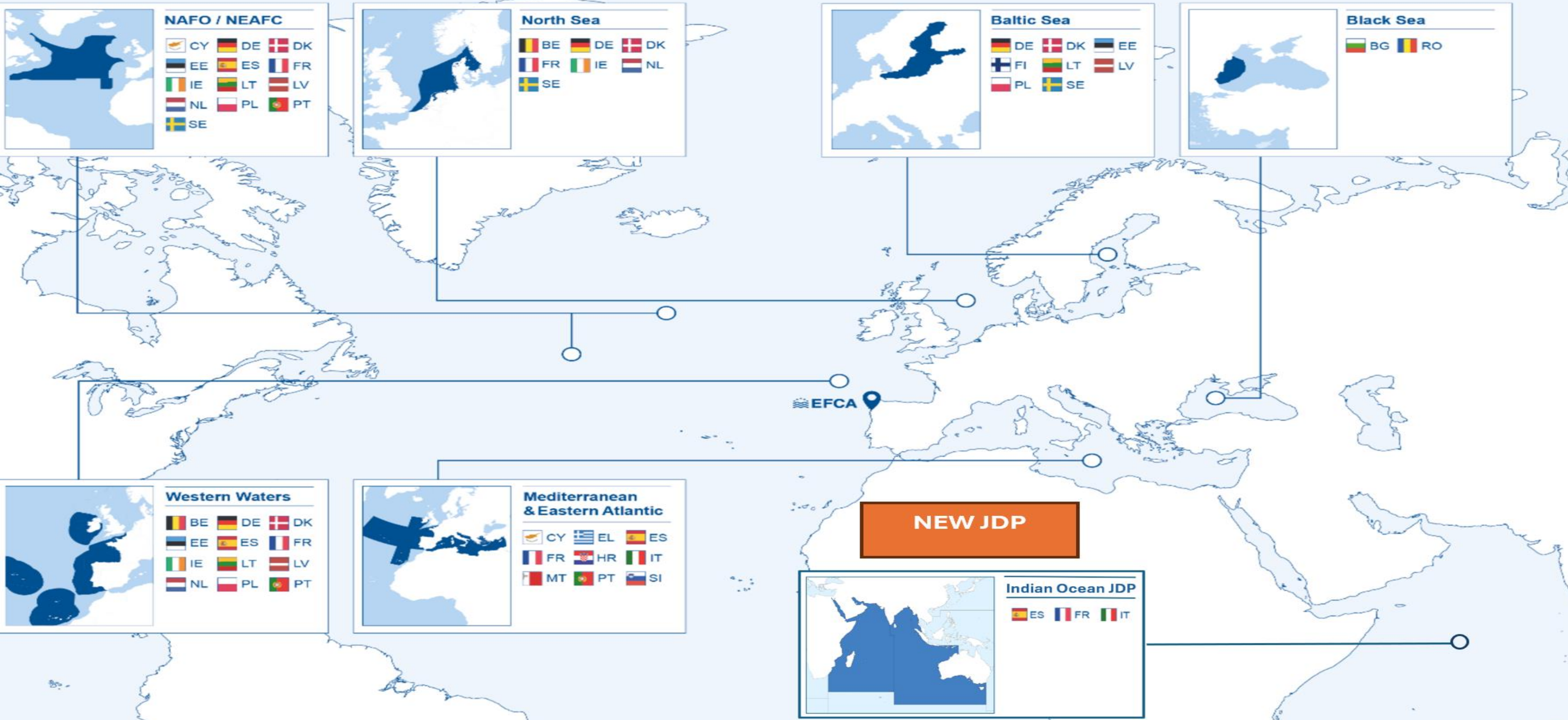
Mediterranean and Eastern Atlantic JDP



For the fisheries that are covered by the SCIP, according to the EFCA Founding Regulation, EFCA shall coordinate the joint inspection and surveillance activities by Member States concerned through a Joint Deployment Plan.



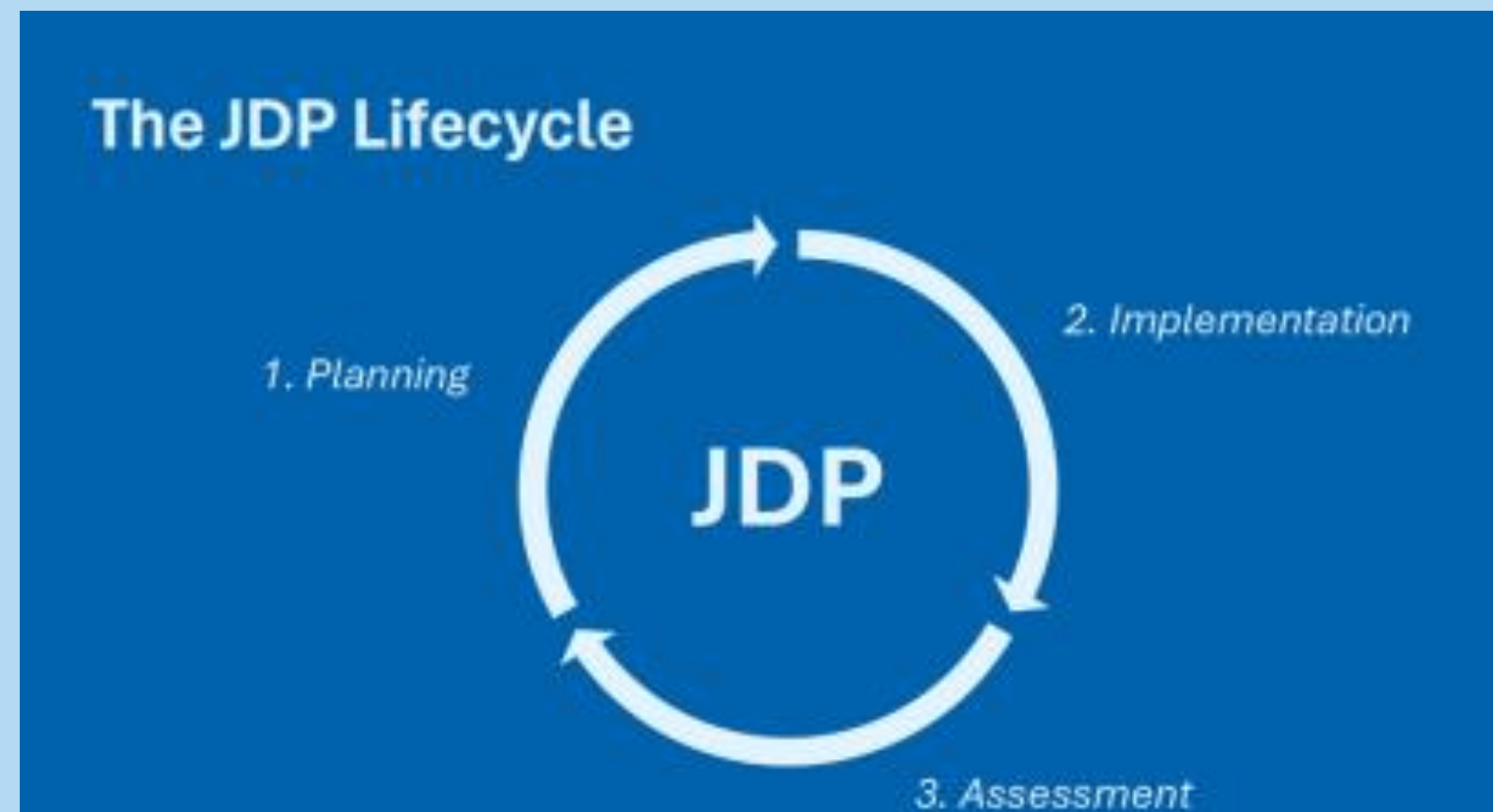
EASTERN ATLANTIC AND MEDITERRANEAN JDP



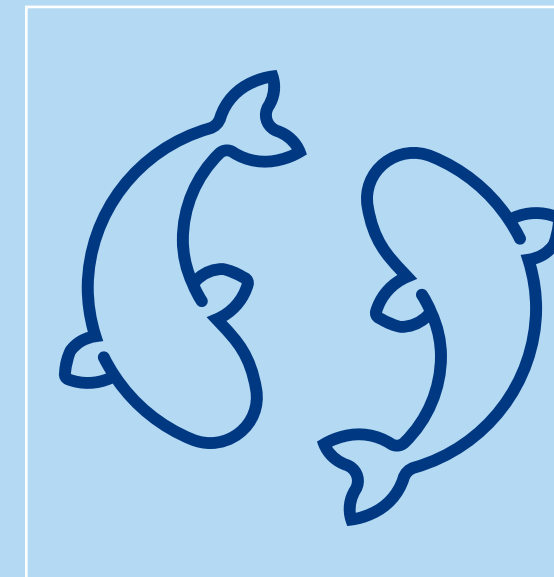
EASTERN ATLANTIC AND MEDITERRANEAN JDP



- **What is a JDP?**

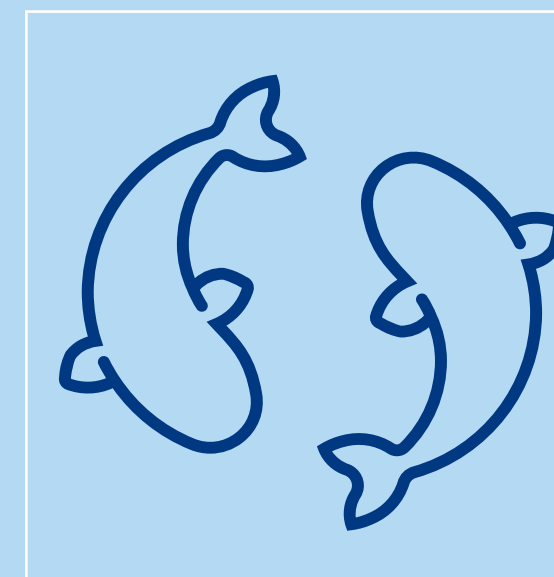
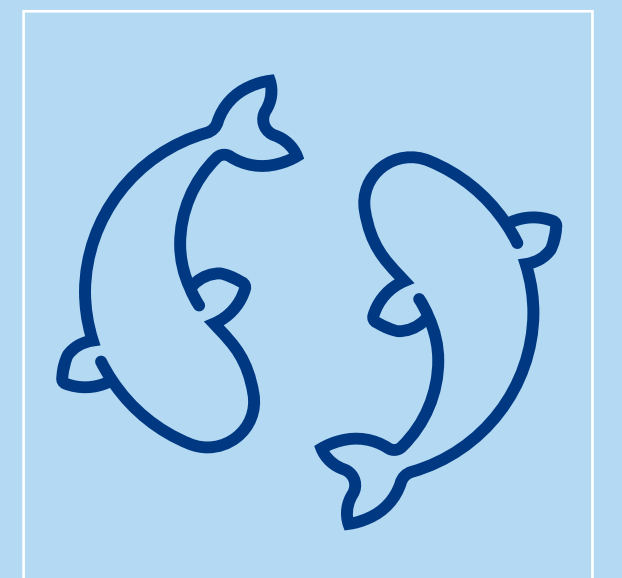


Vehicle for Joint Activities of inspection and surveillance by Member States and EFCA of certain fisheries in specific regions considered a priority for the European Commission and Member States.



Planning of deployment of means based on risk assessment

Implementation through a year round campaign



Annual assessment by EFCA in cooperation with MS to improve future planning

EASTERN ATLANTIC AND MEDITERRANEAN JDP



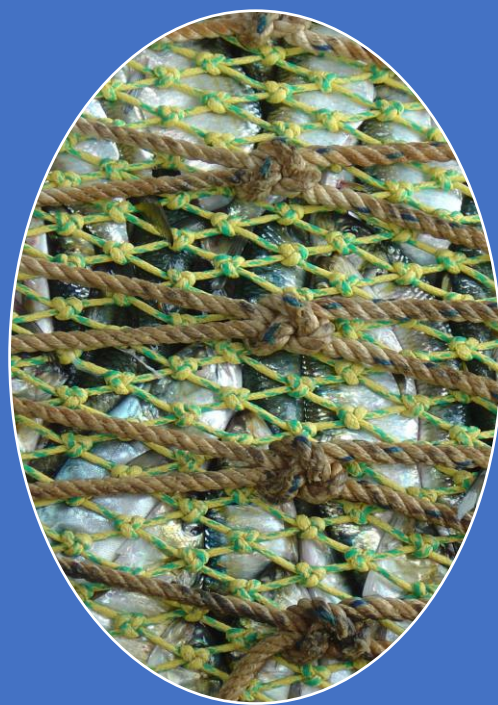
Why having a JDP?



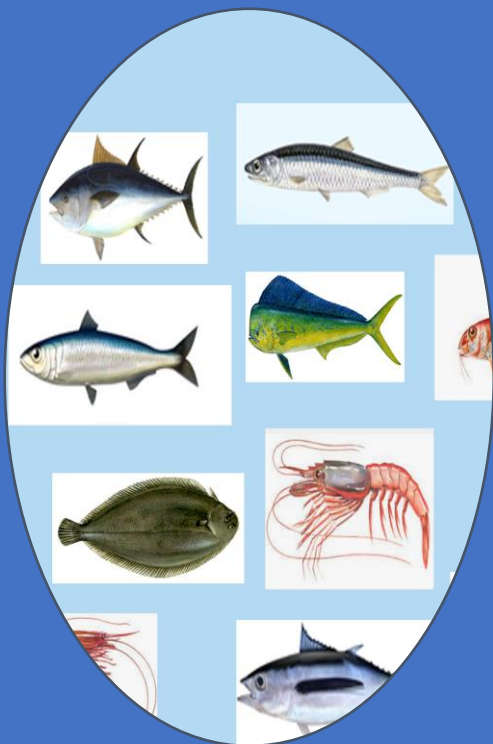
By organising the best use of human and material resources pooled by MSs, we promote:

- Uniformity and effectiveness of control
- Increased transparency
- A risk-based approach/methodology
- Level playing field for the fishing industry
- A cost effective/efficient use of inspection and control resources
- EFCA patrol vessel year-round

EASTERN ATLANTIC AND MEDITERRANEAN JDP



Year-round
continuous
joint
campaign
with MS
concerned



Exchange of
information
on
inspections,
sightings and
assets



Permanent
data exchange
in the region
(VMS, ERS)



Pooling of
joint
inspection
means (FPVs,
flights)



Exchange of
inspectors (at
sea and on
land)



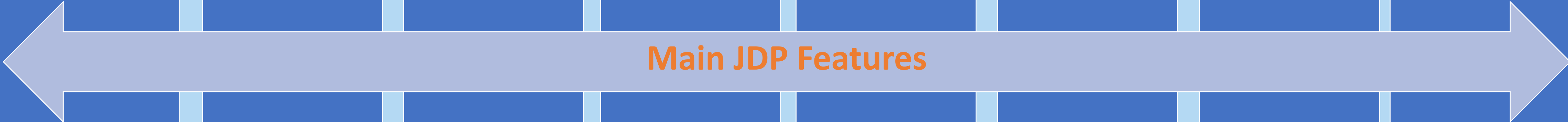
MS experts
deployment
to
Coordination
Centre at
EFCA



Regional Risk
Assessment
(based on
fleet
segments)



Prioritised
inspections on
highest risk
categories

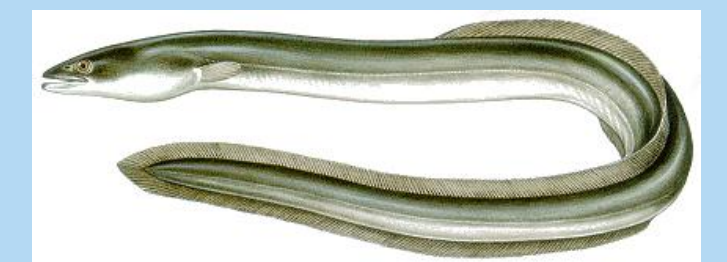
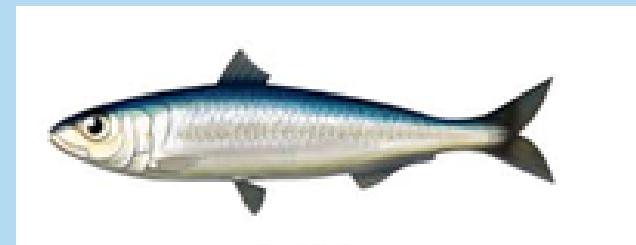


Main JDP Features

EASTERN ATLANTIC AND MEDITERRANEAN JDP


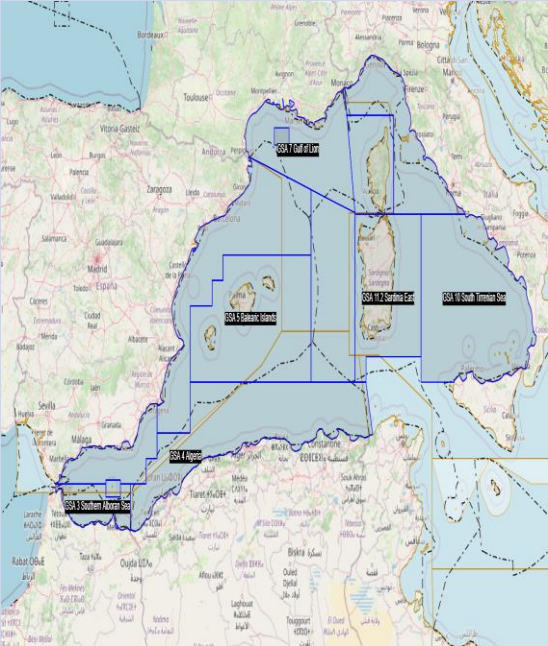

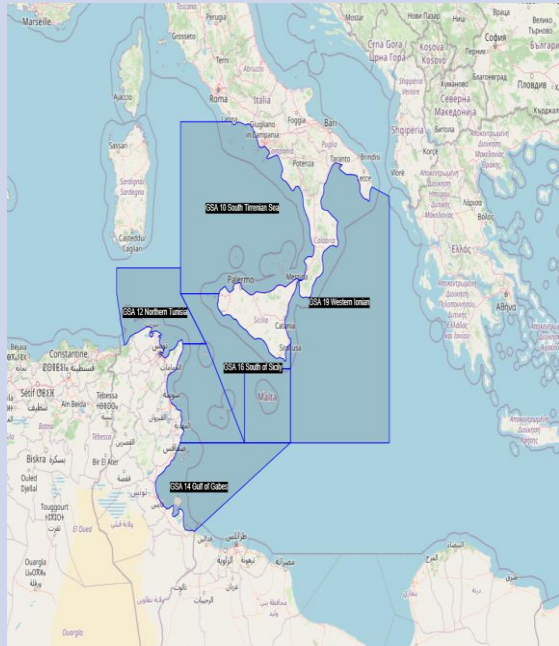

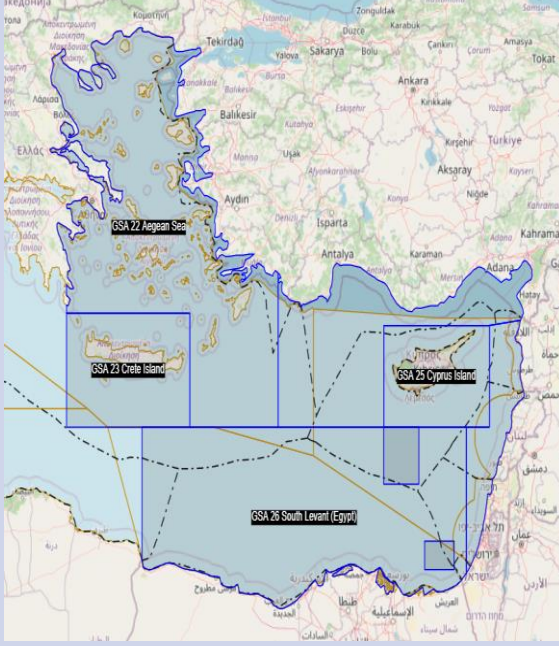



Some of the fisheries covered by MED JDP

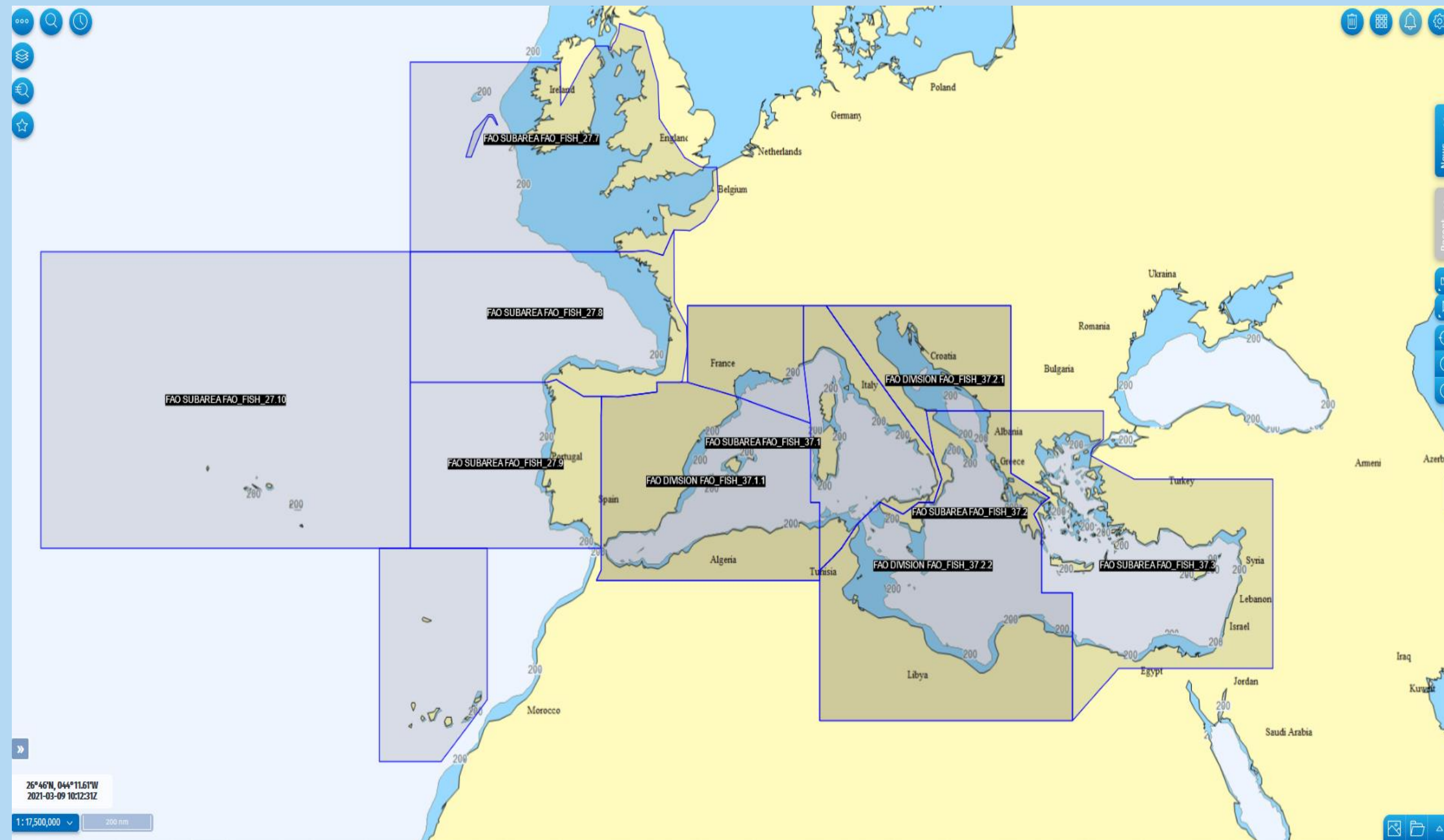


PRELIMINARY RESULTS OF THE 2024 SPECIFIC CAMPAIGN FOR BLUEFIN TUNA OF THE EASTERN ATLANTIC AND MEDITERRANEAN JDP



	MEDITERRANEAN SEA						
SPECIFIC CAMPAIGNS							
	MSC1 HIGH MIGRATORY SPECIES	MSC2 WESTERN MEDITERRANEAN	MSC3 BFT /TRAPS and other HMS	MSC4 STRAIT OF SICILY, SOUTH TYRRHENIAN AND WESTERN IONIAN	MSC5 ADRIATIC SEA	MSC6 EASTERN MEDITERRANEAN	MSC7 FISHERIES RESTRICTED AREAS

PRELIMINARY RESULTS OF THE 2024 SPECIFIC CAMPAIGN FOR BLUEFIN TUNA OF THE EASTERN ATLANTIC AND MEDITERRANEAN JDP



- To control the activity of **purse seiners, towing and auxiliary vessels, farms and traps**, including the possibility to control third countries in the framework of the ICCAT Joint Scheme of International Inspection
- To control the activity of the fleet targeting other highly migratory species and other fleet segments potentially catching these species



PRELIMINARY RESULTS OF THE 2024 SPECIFIC CAMPAIGN FOR BLUEFIN TUNA OF THE EASTERN ATLANTIC AND MEDITERRANEAN JDP



MS at EFCA CC	No experts	Deployment days
CYP	1	63
FRA	2	31
ESP	1	41
HRV	3	59
ITA	4	47
MLT	3	60
Total	14	301

PRELIMINARY RESULTS OF THE 2024 SPECIFIC CAMPAIGN FOR BLUEFIN TUNA OF THE EASTERN ATLANTIC AND MEDITERRANEAN JDP



EU PS 2024 Fishing patterns

- Balearic Sea: 4 EU JFOs (32 PS)
- Tyrrhenian Sea: 2 EU JFOs (13 PS)
- Central Med: 2 EU JFOs (5 PS)
- Adriatic Sea: 1 EU JFO (14 PS)

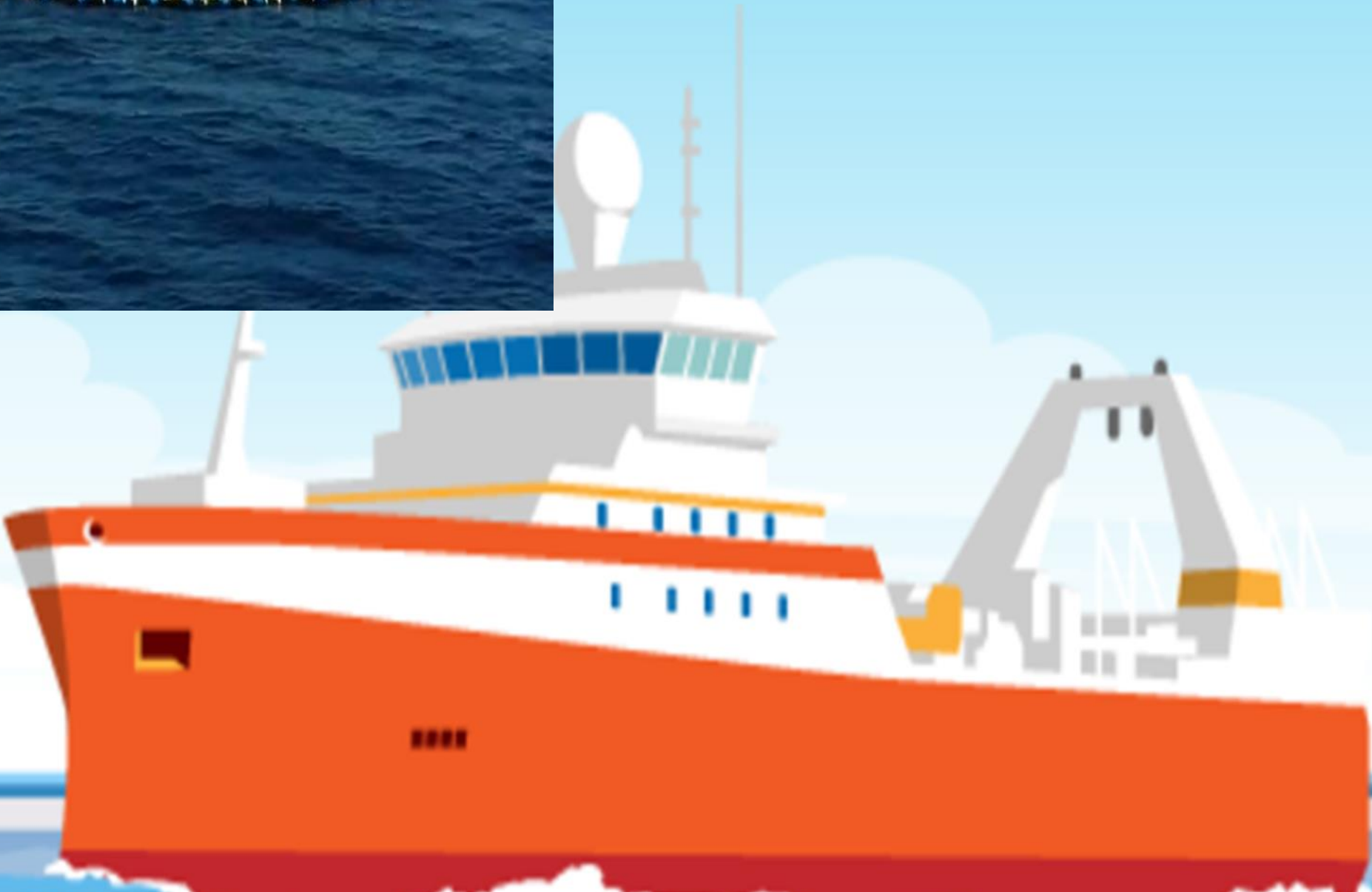
PRELIMINARY RESULTS OF THE 2024 SPECIFIC CAMPAIGN FOR BLUEFIN TUNA OF THE EASTERN ATLANTIC AND MEDITERRANEAN JDP



Patrol activities (provisional)	Total
Number of Sightings	400
Number of inspections	3328
No of insp/sigh with at least 1 SI	183
Total number of SI	221



MSC3: 75 ICCAT Inspection reports performed up to 22nd July, 16 of them with ICCAT SI (11 Non-EU / 5 EU)



Live BFT fisheries

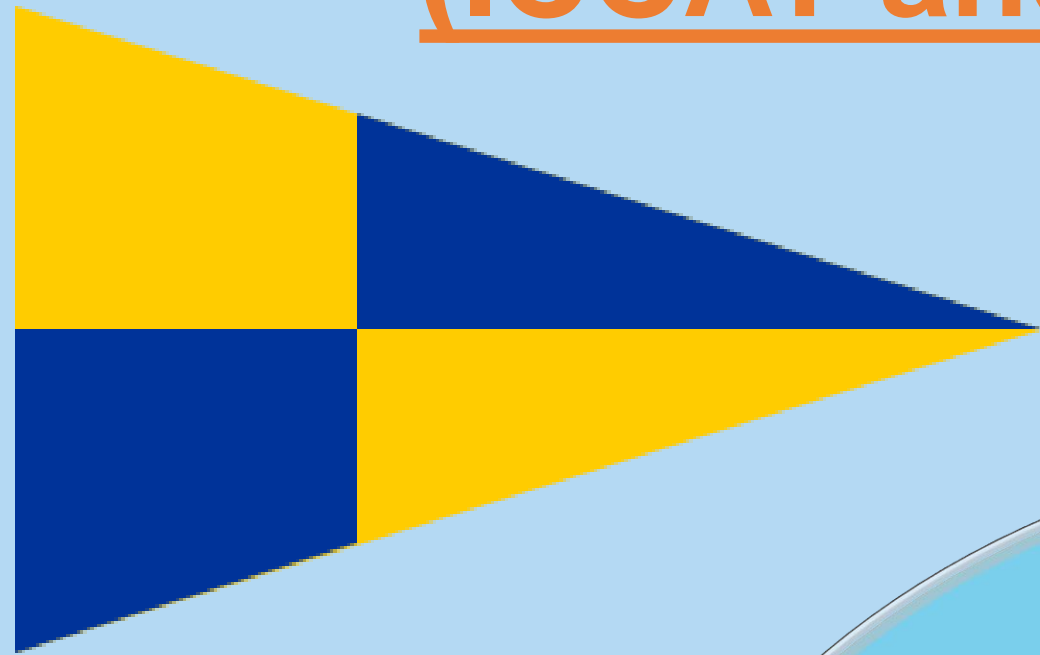
Main outcomes up to 22nd July (end of JDP campaign)

TOTAL ACTIVITIES AT SEA EU BFT	TOTAL
No of catches	187
No. of releases before first transfer	7
No. of first transfers	180
No. of voluntary control transfer	1
No. of investigations	6
No. of control transfers	4
No. of releases at sea	3
Quantity released in number	6273
Quantity released in kg	472816

EU ACTIVITIES AT EU FARMS	TOTAL
No. of caging	77
No. of investigations	21
No. of control transfers	0
No. of releases after caging	0
Quantity released in number	0
Quantity released in kg	0
Total caging of non-EU BFT	35
Total investigation of non-EU BFT	1



International inspection schemes (ICCAT and GFCM)



- EFCA CC active at Vigo for MSC3, 4, 5, and 6, and MMO ADRIA. Hosting a total of 30 experts, including 2 TUN and 2 FRONTEX
- OCEAN SENTINEL 23 patrols within 2024. Receiving a total of 75 fisheries inspectors, including 2 TUN and 2 MON, so far.
- 12 Trainings delivered so far to MS/EU Inspectors, including 3 regional trainings (BFT-SWO-ADRIATIC)



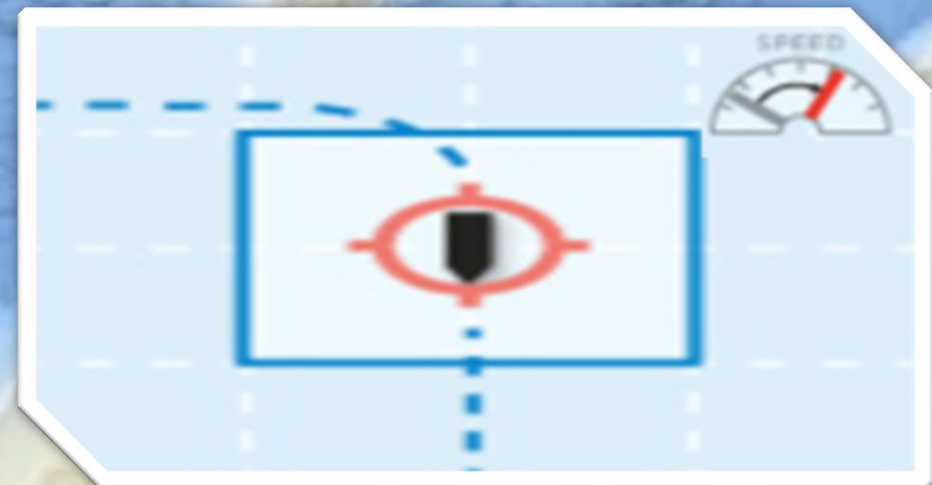
International inspection schemes



- 108 ICCAT IRs at this moment during 2024, 33 of them for 3rd country vessels
- 18 ICCAT IRs with suspected infringements reported. 12 of them on board 3rd country vessels (11 + 1 UNK)
- 40 GFCM IRs raised at this moment during 2024, 8 of them for 3rd country vessels
- 12 GFCM IRs with suspected infringements reported. 8 of them on board 3rd country vessels (7 + 1 UNK)

MONITORING OF GFCM FISHERIES RESTRICTED AREAS

Automatic Behaviour Monitoring tools (ABMs)



Eastern Gulf of Lion (Zone A and B)

Jabuka/Pomo Pit A, B and C

Bari Canyon (Zone A and B)

Santa Maria di Leuca

Nile delta area cold hydrocarbon seeps

Eratosthenes Seamount

FRA 1 – East of Adventure Bank

FRA 2 – West of Gela Basin

FRA 3 – East of Malta Bank

Automatic Behaviour Monitoring tools (ABMs)

ABMs are used in fisheries control to:

- ✓ Monitor if there are any speed anomalies (speed outside a predefined threshold) for specific vessels in the areas of interest
- ✓ Support the maritime surveillance operators in the FMC by providing an increased maritime situation awareness and automated alerting
- ✓ Use during MED JDP specific campaigns, resulting in some cases in the tasking of MCS means to monitor area where alert was generated
- ✓ Support to detection of suspected infringements

Eastern Gulf of Lion (Zone A and B)

Jabuka/Pomo Pit A, B and C



FRA 1 – East of Adventure Bank

Thank you for your attention





EFCA
European Fisheries Control Agency

