

FISHERIES



The 2013 Bluefin tuna campaign



**European
Commission**
Maritime Affairs
and Fisheries

Directorate Mediterranean and Black Sea

Medrac - 15 Oct.
2013

2013 BFT campaign

- EU 2013 quota: 7 548 t (7935t with HRV)
- MS actively Involved: ESP, FRA, ITA, GRC, PRT, MLT, CYP and HRV
- Fishing period for Purse seiners (PS): 26th May – 24th June
- Increase in Purse Seiners fleets from FRA and ITA following end of payback period
- Control measures agreed at the last ICCAT Meeting (Rec. [12-03])

The EU Fleet 2013

Gear	CYP	ESP	FRA	GRC	ITA	MLT	PRT	Total
Bait boat		60	6					6
Longline	4	23	94	16	30	22		189
Purse seine		6	17	1	12	1		37
Trawl			54					54
Trolling line			14					14
Catching total	4	29	185	17	42	23	0	300
Traps		4			3		3	10
Other vessels		129	1	5	76	61	5	277
Total All Metiers	4	162	186	22	121	84	8	587



Quota allocated to CPCs

CPC	Quota
Albania	33.58
Algeria	143.83
China	38.19
Croatia	390.59
Egypt	67.08
European Union	7548.06
Iceland	30.97
Japan	1139.55
Korea	80.53
Libya	937.65
Morocco	1270.47
Norway	30.97
Syria	33.58
Tunisia	1057
Turkey	556.66
Chinese Taipei	41.29
TOTAL	13400



Control policy: a key element

Basic principles:

- Zero tolerance approach (ICCAT measures including 12-03, IUU and control regulations)
- Comprehensive monitoring, control and enforcement policy
- Coordination between all the parties involved

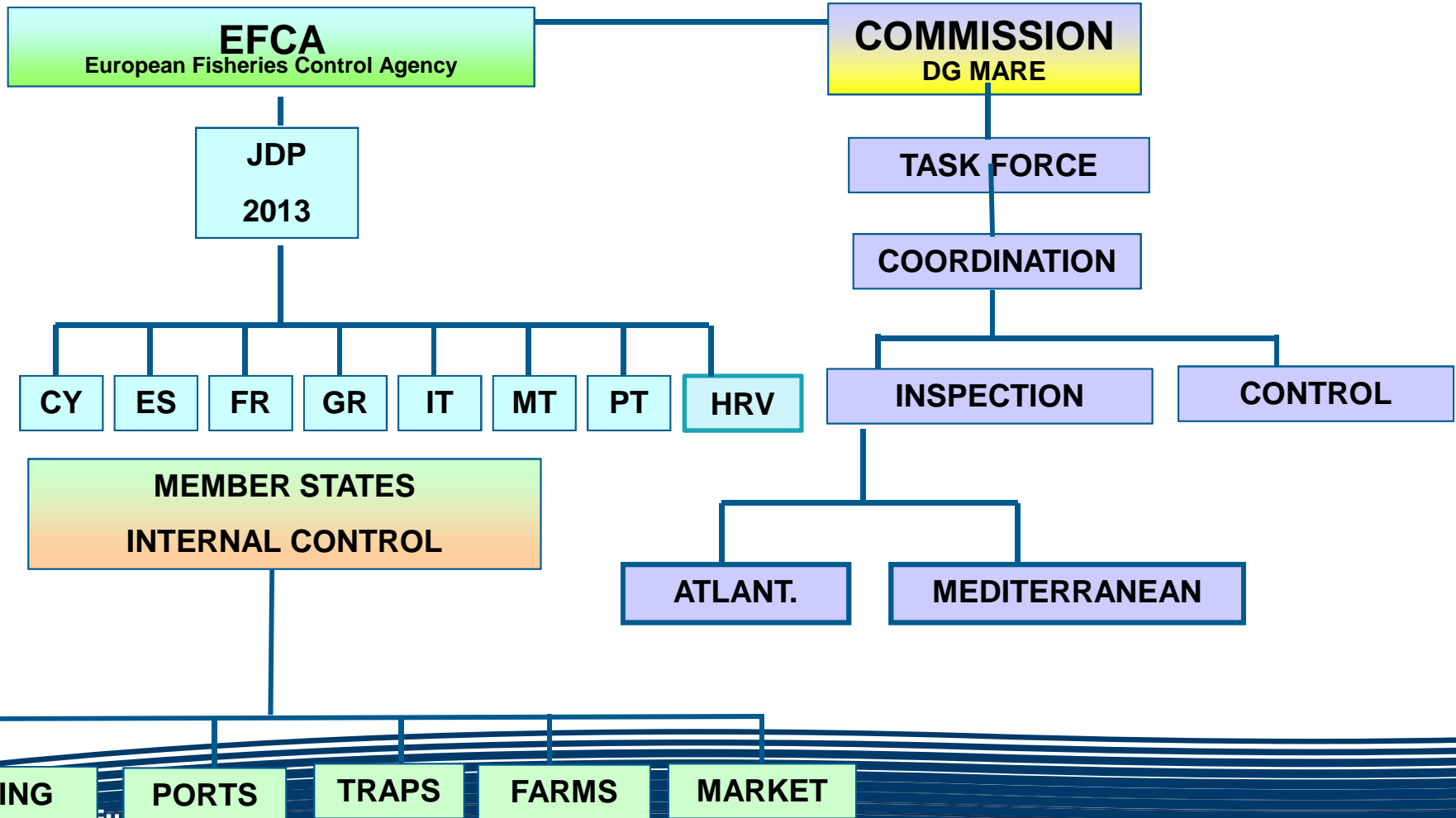
Parties involved

- **ICCAT:** International level
- **Commission:** Represents EU in ICCAT, Coordination of MS activities
- **EFCA:** Coordinates Inspections of MS and EU under the Joint deployment plan (JDP)
- **Member States:** Main responsibility for control and follow-up of Infringements

3 major steps:

- **Preparation:** Legal framework, experiences from previous years
- **During campaign:** Inspections and daily analysis of data submitted
- **During/after campaign:** Follow-up of non-compliances, reporting to ICCAT

BFT 2013 Control organisation



Inspections by DG MARE in 2013

(Up to 10th October)

- **Means:** 4 Inspectors
- **Missions:** 11
in EU Member States,
mainly on farms, traps and landings
- **Aim:** Assessment of implementation of control measures by
Member States



EU Quota Use 2013

Flag	Quota group	Quota	Catches	Left	Usage %
CYP	longliners	14.0	15.8	-1.7	112%
CYP	rest of CYP quota	4.0	1.4	2.6	34%
	Cyprus, total	18.1	17.1	0.9	95%
ESP	purse seiners	918.8	917.4	1.4	100%
ESP	bait boats, Cantabrian Sea	0.0	0.0	0.0	0%
ESP	line vessels, Gibraltar	33.7	11.7	21.9	35%
ESP	line vessels, Med.	14.9	8.2	6.6	55%
ESP	traps	1,370.0	1370.0	0.0	100%
ESP	by-catch and recreational	167.1	133.7	33.4	80%
	Spain, total	2,504.4	2,441.1	63.4	97%
FRA	purse seiners	1,945.0	1939.9	5.1	100%
FRA	line vessels, Med.	254.0	99.5	154.5	39%
FRA	Atlantic fleet	247.0	159.0	88.0	64%
FRA	by-catch	20.0	4.8	15.2	24%
FRA	recreational	0.0	5.0	-5.0	0%
FRA	rest of FRA quota	5.2	0.0	5.2	0%
	France, total	2,471.2	2208.1	263.1	89%
GRC	purse seiners	89.8	89.7	0.1	100%
GRC	line vessels and by-catches	87.5	88.3	-0.9	101%
GRC	rest of GRC quota	0.3	0.0	0.3	
	Greece, total	177.5	178.0	-0.5	100%
ITA	purse seiners	1,475.7	1474.5	1.2	100%
ITA	longliners	183.5	172.5	11.0	94%
ITA	traps	222.0	222.0	0.0	100%
ITA	rest of ITA quota	69.2	63.2	5.9	91%
	Italy, total	1,950.4	1932.3	18.1	99%
MLT	purse seiners	66.6	65.9	0.7	99%
MLT	longliners and by-catches	92.9	89.4	3.5	96%
MLT	rest of MLT quota (recreational)	0.5	0.2	0.3	46%
	Malta, total	160.0	155.5	4.5	97%
PRT	trap	235.5	240.4	-4.9	102%
PRT	rest of PRT quota	0.0	1.8	-1.8	0%
	Portugal, total	235.5	242.2	-6.7	103%
	EU total	7,487.1	7,163.0	324.2	96%
Flag	Quota group	Quota	Catches	Left	Usage %
HRV	purse seiners	380.6	342.3	38.3	90%
HRV	handlines and by-catches	7.5	0.4	7.1	6%
HRV	rest of HRV quota	2.5	39.2	-36.7	
	Croatia, total	390.6	381.9	8.7	98%

General non compliances detected / main issues (Up to 15 October)

- **Submission of catch data on irregular basis**
- **BCD completion/submission problems**
- **Inconsistencies detected in transfer declarations**
- **Mis-Reporting by EU PS fleet**
- **Implementation of ICCAT Rec12-03 (Article 88)**
(Margin of tolerance)



2013 SCRS Meeting

- **BFT (E):**
 - All CPUEs showing increases in recent years
 - Considerable uncertainty. SCRS cannot give robust advice supporting TAC increase
 - Stabilization in management measures would allow SCRS to better estimate the magnitude and speed of the recovery

- **Med SWO:**
 - Stock below level which can support MSY
 - Fishing mortality needs to be reduced
 - Recommendation of SCRS for capacity reduction

- **Med ALB:**
 - Stable patterns of ALB Biomass
 - Considerable uncertainty
 - Management should aim at limiting increases in catches



Up-coming ICCAT meetings

- **17-18. Oct.:** Technical Meeting EC with MS, industry, NGOs
- **20-21. Nov.:** ICCAT Compliance Committee Meeting (CoC) (Cape Town, SA)
- **22-25. Nov.:** 23rd ICCAT Regular Meeting (COMM) (Cape Town, SA)

