



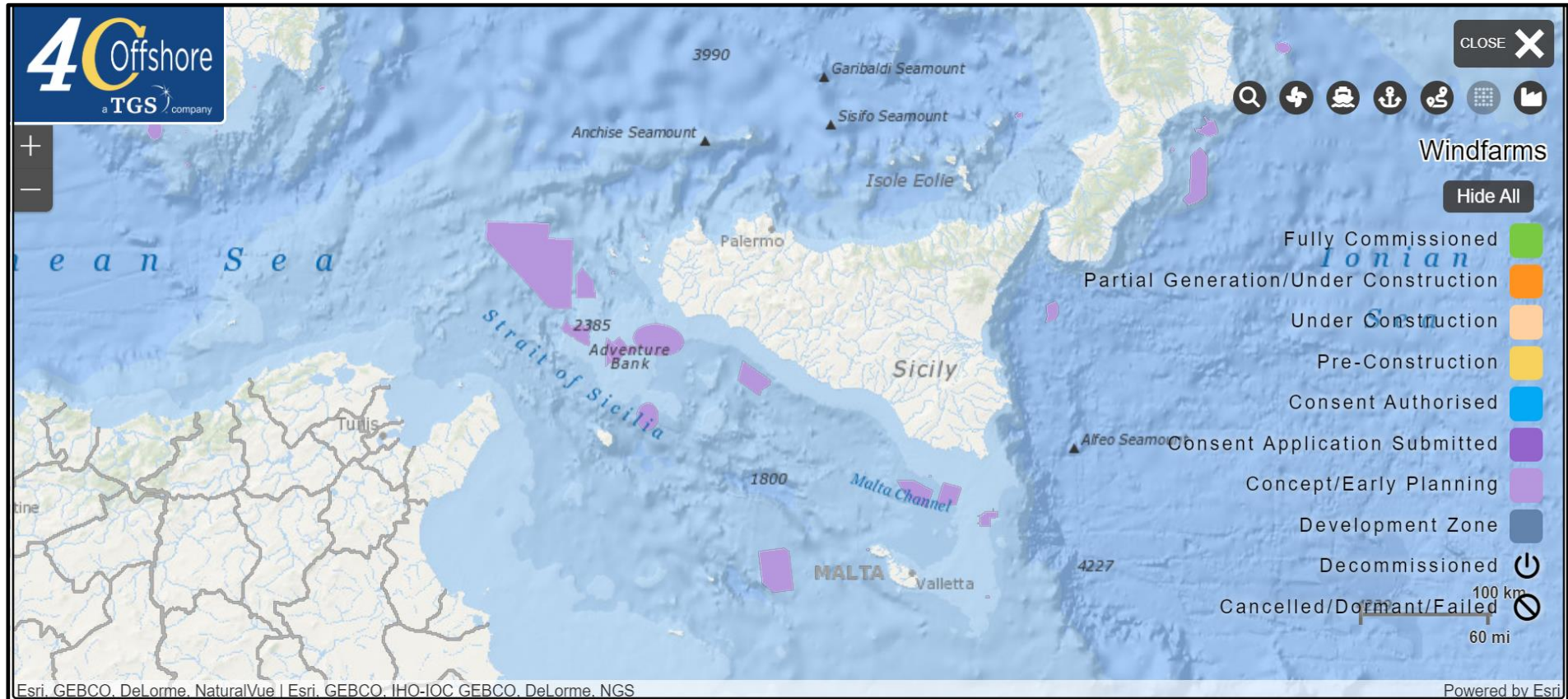
MEDAC meetings 22-23

22th February- FG Strait of Sicily

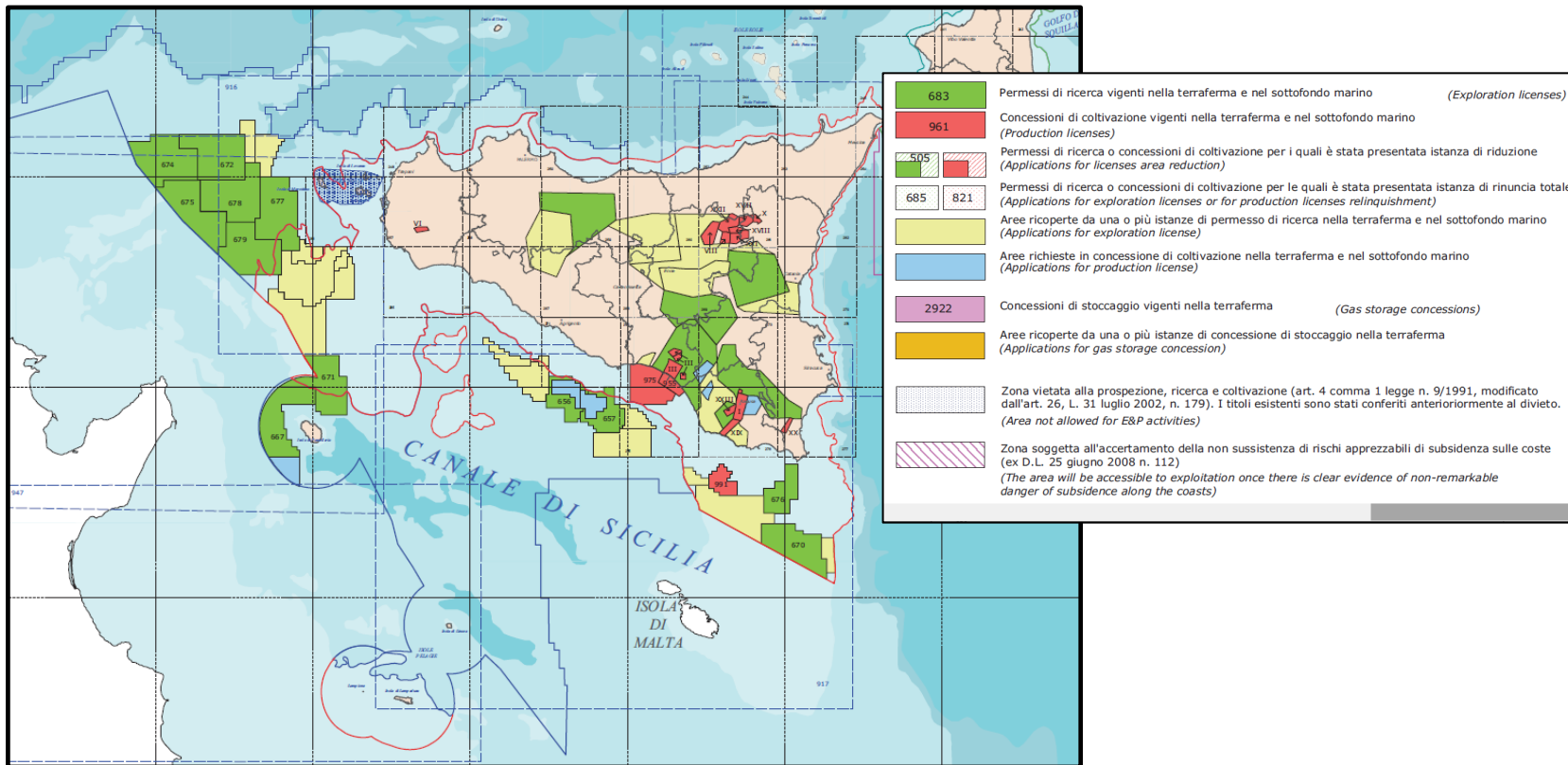
Marine areas to be used for energy production and other activities

WWF Mediterranean Marine Initiative
Marco Costantini, Regional Manager, Fisheries

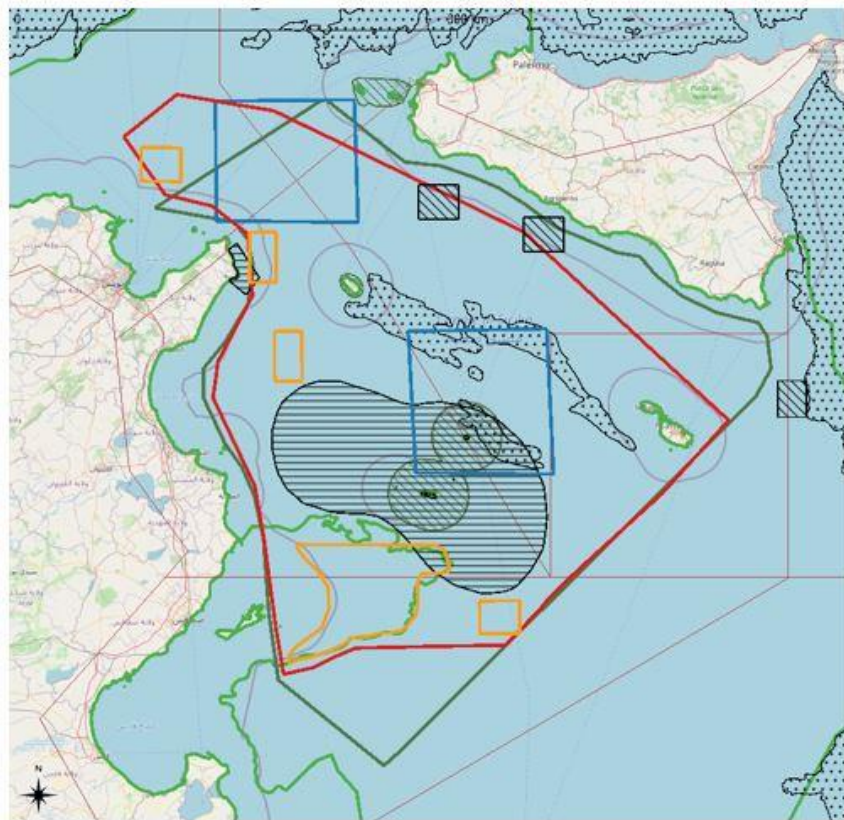
Offshore wind mills [\(https://map.4coffshore.com/offshorewind/\)](https://map.4coffshore.com/offshorewind/)



Oil and Gas (<https://www.mise.gov.it/>, 2013; [WWF MedTrends 2015](#))



Biological and Fisheries Important Areas

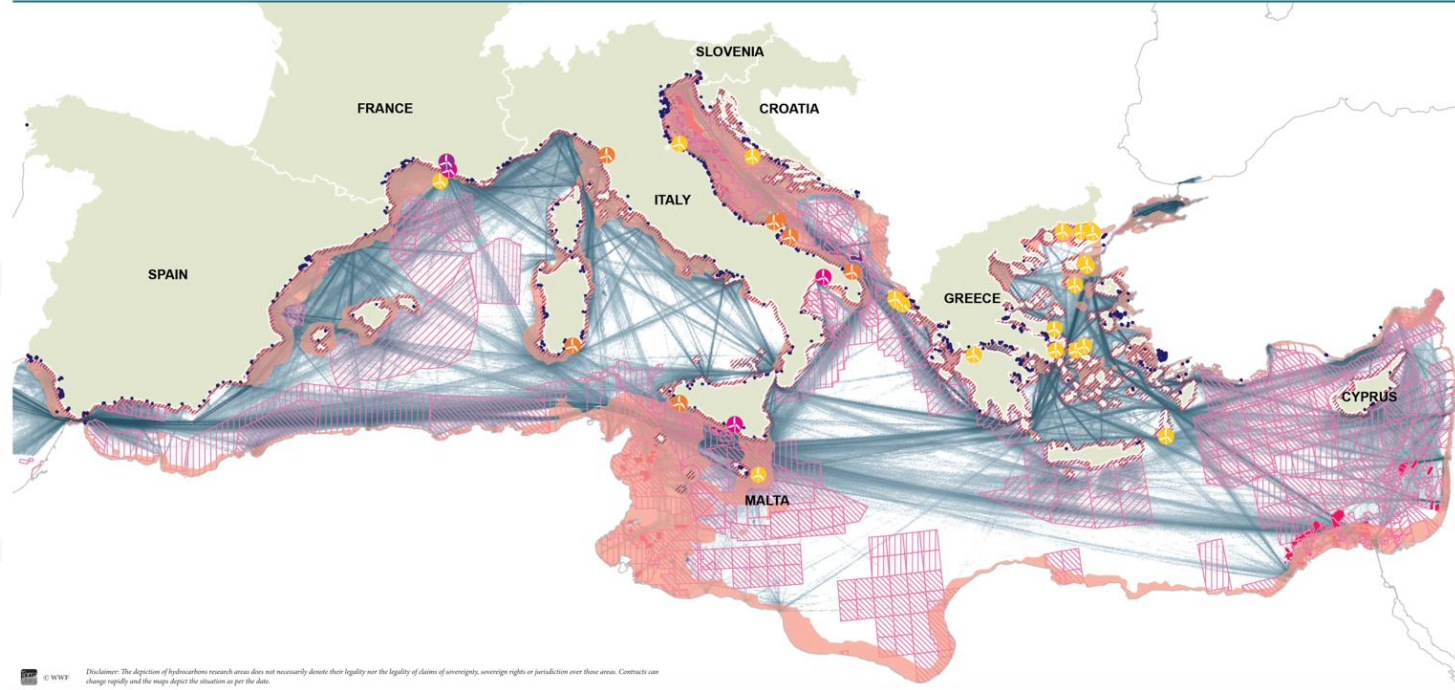


LEGEND

-  Project Area
-  Sicily Channel
-  Priority Area for Deep Sea Protection
-  Marine Protected Area (MPA)
-  FAO Areas
-  Important Marine Mammal Area (IMMA)
-  Trawling Ban Zone
-  Proposed Fishery Restricted Area (FRA)
-  Fishery Restricted Area (FRA)
-  Ecologically and Biologically Significant Area

Blue Economy Impact - Biodiversity & Fisheries

([WWF Medtrends 2015](#))



© WWF. Disclaimer: The depiction of hydrocarbon research areas does not necessarily denote their legality nor the legality of claims of sovereignty, sovereign rights or jurisdiction over these areas. Contracts can change rapidly and the map depicts the situation as per the date.

<p>MEDITERRANEAN EU COUNTRY</p> <p>DENSITY OF VESSELS TRACKS TOTAL OF DIFFERENT VESSELS INVOLVED: 38 897 Interpolation / Log scaling / Year 2014</p> <p>HIGH ————— LOW</p> <p>MAX = 166966* MEDIAN = 418* MIN = 1*</p> <p>*In 1 grid of 1x1 km</p> <p>Source: AIS density maps by navama technology for nature</p>	<p>OIL AND GAS CONTRACTS</p> <p>OPEN AREA DEVELOPMENT AREA</p> <p>BIDBLOCK AREA PRODUCTION AREA</p> <p>EXPLORATION AREA RELINQUISHED AREA</p> <p>Sources: DrillingInfo (april 2015) drillinginfo</p> <p>National sources collected by WWF (2015)</p>	<p>WIND FARMS PROJECTS</p> <p>CONCEPT/EARLY PLANNING</p> <p>CONSENT APPLICATION SUBMITTED</p> <p>CONSENT AUTHORISED</p> <p>PARTIAL GENERATION/UNDER CONSTRUCTION</p> <p>Source: Offshore4C (2014)</p>	<p>EXPLOITATION OF LIVING RESOURCES</p> <p>AQUACULTURE FARM LOCATION</p> <p>POTENTIAL EX RECREATIONAL FISHING ZONE</p> <p>POTENTIAL PROFESSIONAL FISHING ZONE</p> <p>Sources: WWF (2015), JRC-ISPRA (2012), national sources collected by WWF</p> <p>Note: Data available only for EU countries</p>
---	---	--	--

Professional fishing is the sector most affected by the growing development of the maritime economy:

- Fishing zones will be reduced in particular along coastal areas due to the increasing development of coastal activities;
- Pressures exerted by other sectors on marine ecosystems (e.g. additional fish catch from recreational fisheries, some land-based pollution types, underwater noise generated by ships and by oil and gas activities) are growing and may impact fish stocks directly or indirectly.

Figure 2. Potential spatial interactions between sectors



MEDAC

MEDITERRANEAN
A D V I S O R Y
C O U N C I L

Marco Costantini, Regional Manager, Fisheries
WWF Mediterranean Marine Initiative

mcostantini@wwfmedpo.org