



FISHERIES RESTRICTED AREAS



In accordance with its objectives and general principles, the Commission shall exercise the following functions:

(ii) to establish fisheries restricted areas for the protection of vulnerable marine ecosystems, including but not limited to nursery and spawning areas, in addition to or to complement similar measures that may already be included in management plans”

(iii) to adopt multiannual management plans applied in the totality of the relevant subregions based on an ecosystem approach to fisheries (...)

(Agreement for the Establishment of the General Fisheries Commission for the Mediterranean)

FISHERIES RESTRICTED AREAS

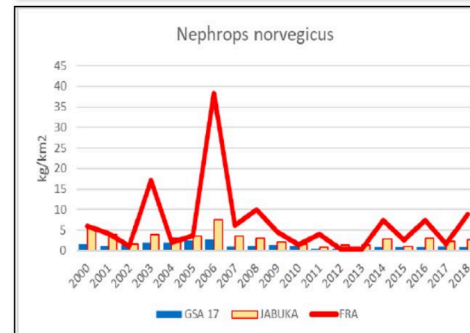
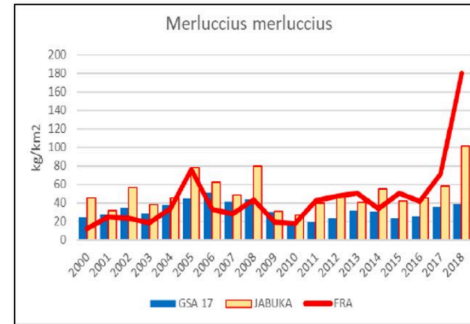
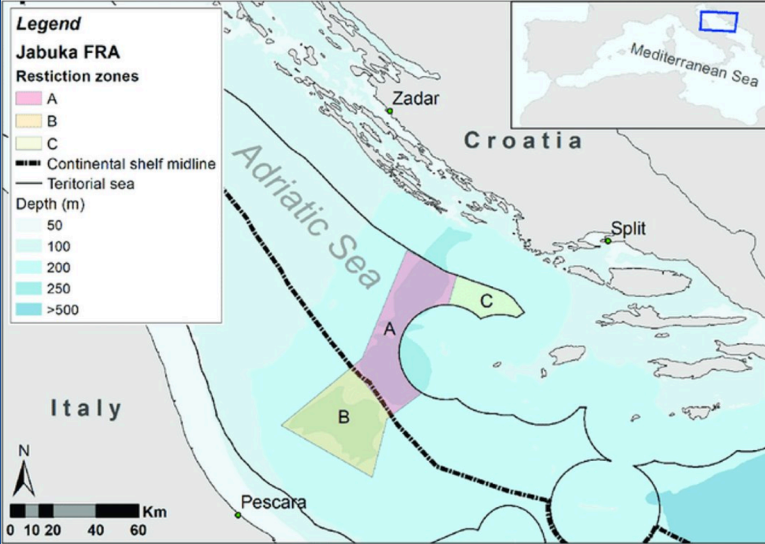


Protection of VMEs

Protection of Essential Fish Habitats

JABUKA/POMO PIT FRA

Jabuka/Pomo Pit FRA success story



- Zone A: closed to demersal and recreational fisheries
- Zones B and C: reduction of fishing effort; temporal closure (Sept & Oct)
- Whole area closed to small pelagic fisheries in 2019-2021



JABUKA/POMO PIT FRA

ENFORCEMENT AND CONTROLS

AUTHORIZED FISHING VESSELS IN 2020



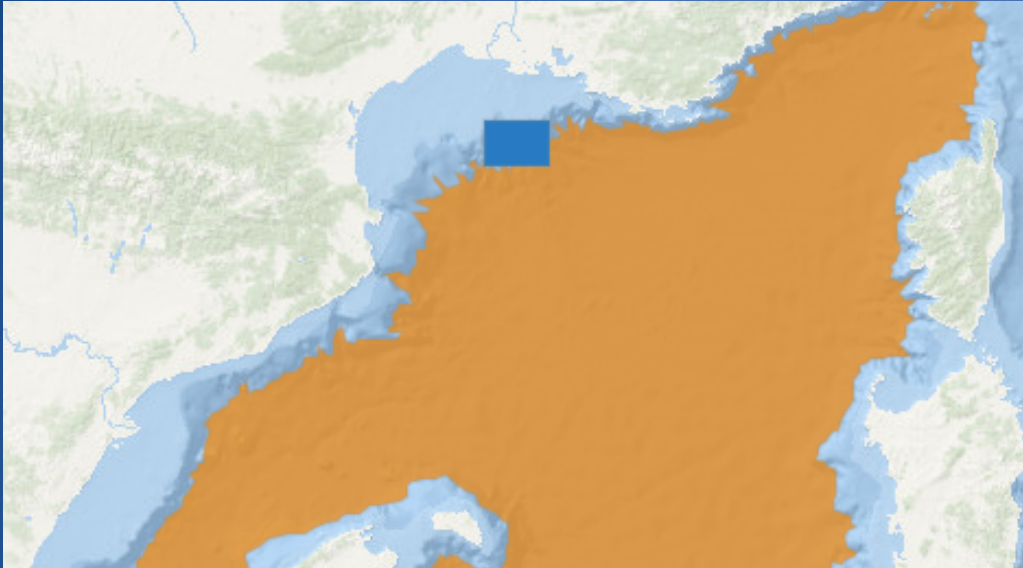
63



75

VMS & AIS active on board
Fishing gear identified, numbered and marked
Designated landing ports
Minimum constant speed for unauthorized vessels

THE GULF OF LION FRA



26 AUTHORIZED OPERATING
VESSELS



6



20

Fishing effort set at 2008 level for vessels using towed nets, bottom and mid-water longlines, bottom-set nets

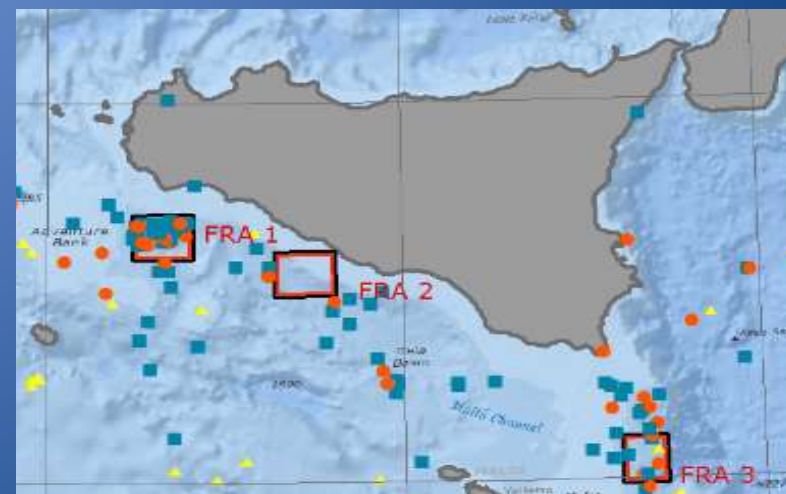
A recent study suggests a failure in the recovery of target species in the FRA, under the current management measures (Vilas et al, Marine Policy 2021)

THE FRAs OF THE STRAIT OF SICILY



- Closure to bottom trawlers
- 1 NM buffer area
- VMS or other geolocation systems fully functional when entering the buffer area

POOR COMPLIANCE



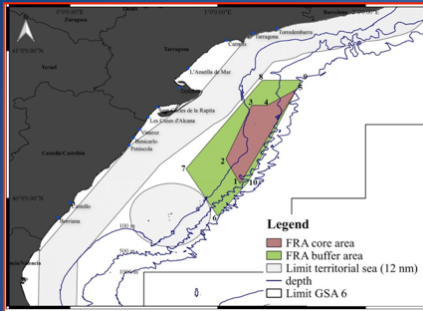
EFCA, 2019

PROPOSED NEW FRAs

Besides ecosystem and habitat protection, well managed and enforced spatial closures can benefit size structure and biomass of commercial demersal fish, with related benefits for the fishing sector .

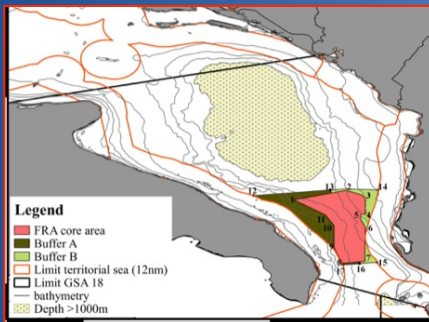


PROPOSED NEW FRAs



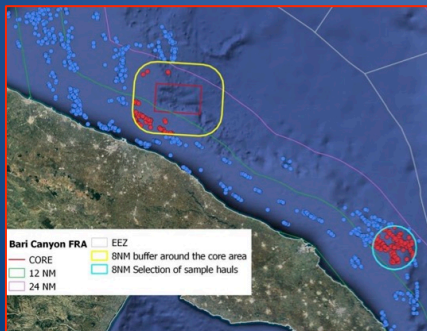
THE EBRO DELTA MARGIN FRA

- EFH: nursery and/or spawning areas of hake, Norway lobster, red mullet and shortfin squid among others
- VMEs: *Isidella elongata*



THE OTRANTO FRA

- EFH: nursery and/or spawning areas of hake, Norway lobster, and deep-water shrimps among others
- VMEs: *Isidella elongata* and deep -water coral *Madrepora oculata*



THE BARI CANYON FRA

- EFH: anchovy, sardine, European hake, red mullet and deep-rose shrimp among others.
- VMEs: cold water corals community

FISH RECOVERY AREAS



FARM TO FORK STRATEGY

EU BIODIVERSITY STRATEGY 2030

EUROPEAN MARITIME FISHERIES AND AQUACULTURE FUND (EMFAF)

“The EMFAF may support actions that contribute to the protection and restoration of aquatic biodiversity and ecosystems” (EMFAF, Art 22.1)

FRAs should be seen as key complementary tool for fisheries management, supporting the recovery of overfished stocks and sensitive habitats and the future of responsible fisheries in the region.



THANKS YOU